

CCC RFI #:026

Subject	Initiator	Status
Camoseal Joint Repair Locations	AWJV	Open

Drawing References:
Construction Details C-030

Question:

Some of the Joints shown to be repaired per the table on Dwg. C-030 are in JPCP replacement areas and the isolation joints have been replaced. In another area the previously repaired joint was not encompassed in a JPCP replacement area (RFI 020). Please confirm the attached table and drawings of camoseal joint repair locations.

Dist	COUNTY	ROUTE	POST MILES TOTAL PROJECT	SHEET No.	TOTAL SHEETS
12 08	Oran Ribe	91 91,15	Var		

REGISTERED CIVIL ENGINEER **Francis J. Gbondo** No. 71310 Exp. 12-31-23 CIVIL

PLANS APPROVAL DATE 9-21-22

THE STATE OF CALIFORNIA OR ITS OFFICERS OR AGENTS SHALL NOT BE RESPONSIBLE FOR THE ACCURACY OR COMPLETENESS OF SCANNED COPIES OF THIS PLAN SHEET.

URS CORPORATION
2020 EAST FIRST STREET,
SUITE 400
SANTA ANA, CA 92705

RIVERSIDE COUNTY
TRANSPORTATION COMMISSION
4080 LEMON STREET 3rd FLOOR
RIVERSIDE, CA 92501

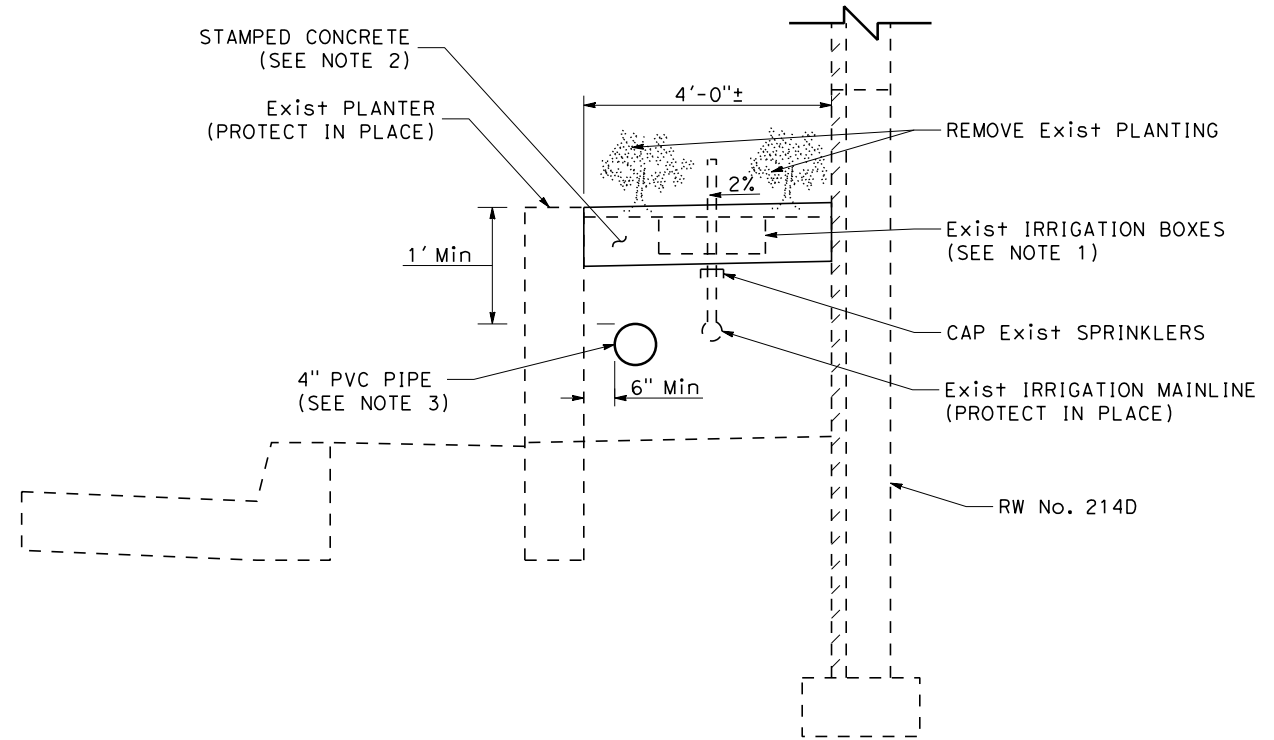
PLANTER MODIFICATION NOTES:

- ADJUST Exist+ IRRIGATION BOXES TO GRADE AS DIRECTED BY THE ENGINEER.
- LIGHT TAN COLOR. SQUARE, 8" X 8" GRID PATTERN (MATCH LINCOLN AVENUE AT 2ND STREET MEDIAN PAVING) OR APPROVED EQUAL.
- PLACE REMOVABLE CAPS ON EACH END OF PIPE PER ENGINEER DIRECTION.

JOINT REPAIR NOTES:

- REMOVE Exist+ JOINT MATERIAL AND ALL OTHER DELETERIOUS MATERIAL (FULL DEPTH) AND CLEAN JOINT.
- REPAIR JOINT PER CONCRETE CAMOSEAL MANUFACTURER/SUPPLIER INSTRUCTIONS.
- GRIND TRANSVERSE JOINT SMOOTH BETWEEN CONCRETE BARRIER SLAB AND JPCP SHOULDER AT Sta "M3" 358+88±.

Camoseal Joint Repairs 2.07.2023

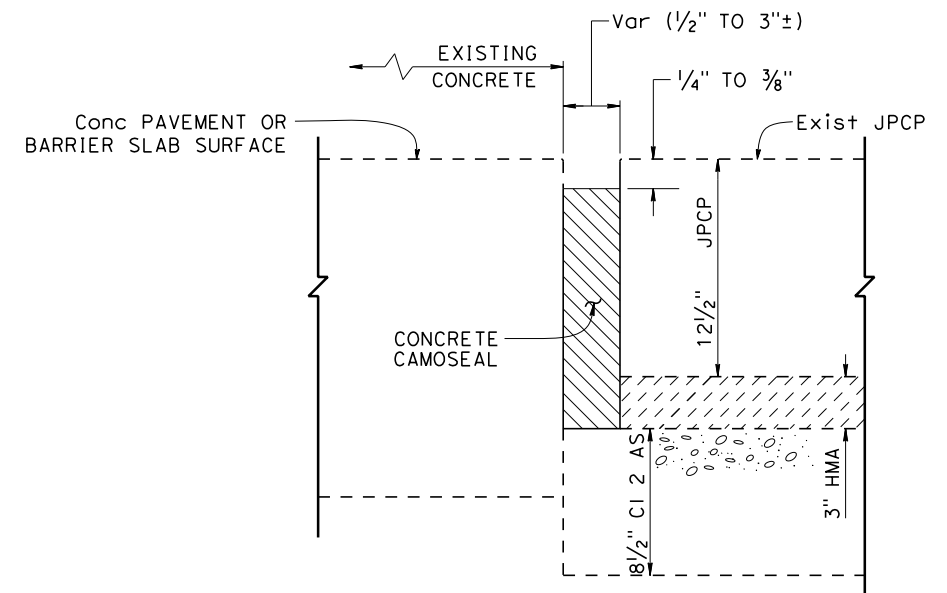


DETAIL "A"

PLANTER MODIFICATION LIMITS

Approx Beg Sta	Approx END Sta	LOCATION
"A" 314+82	"A" 319+58	BOLLERO PLACE
"A" 319+62	"A" 319+78	
"A" 319+82	"A" 321+38	
"A" 321+42	"A" 323+00	

BOLLERO PLACE PLANTER MODIFICATION DETAILS



DETAIL "B"

"A" 320+94 "A" 322+44 10A/3A JPCP Lane 1 to Existing JPCP Lane 1 (150 lf) **322+44** JOINT REPAIR LOCATIONS

Approx Beg Sta	Approx END Sta	LOCATION	DESCRIPTION
"A" 316+54	"A" 322+51	10A/3A	Conc BARRIER SLAB / JPCP JOINT
"M5" 5328+70	"M5" 5331+15	3B	Conc BARRIER SLAB / JPCP JOINT
"A" 338+89	"A" 339+36	4	Conc BARRIER SLAB / JPCP JOINT
"CDW" 359+19	"CDW" 359+76	8	Conc BARRIER SLAB / JPCP JOINT ISO Joint Replacement
"CDW" 360+59	"CDW" 361+98	8	Conc BARRIER SLAB / JPCP JOINT ISO Joint Replacement
"M3" 357+70	"M3" 358+88	5A	Conc BARRIER SLAB / JPCP JOINT
"A" 346+15	"A" 348+20	1	"CDW" ETW AT MAIN St WB OFF RAMP GORE
"A" 329+16	"A" 333+99	3B	MAINLINE ETW AT MAIN St WB ON RAMP GORE
"A" 330+57	"A" 332+28	3B	MAINLINE ES JUST BEFORE MAIN St WB ON RAMP
"CDW" 342+93	"CDW" 344+05	1	BETWEEN LANE No. 2 AND LANE No. 3

JOINT REPAIR DETAILS

RELEASED FOR CONSTRUCTION
10 / 21 / 2022
RTTC

CONSTRUCTION DETAILS

NO SCALE **C-030**

STATE OF CALIFORNIA - DEPARTMENT OF TRANSPORTATION
Jeffrey G. Chapman
Michael Lynde
Francis Gbondo

Dist	COUNTY	ROUTE	POST MILES TOTAL PROJECT	SHEET No.	TOTAL SHEETS
1208	Riverside	91, 15	Var		

REGISTERED CIVIL ENGINEER
 10-7-22 DATE
 FRANCIS J. GRONDO
 No. 71310
 Exp. 12-31-23
 CIVIL
 STATE OF CALIFORNIA

PLANS APPROVAL DATE

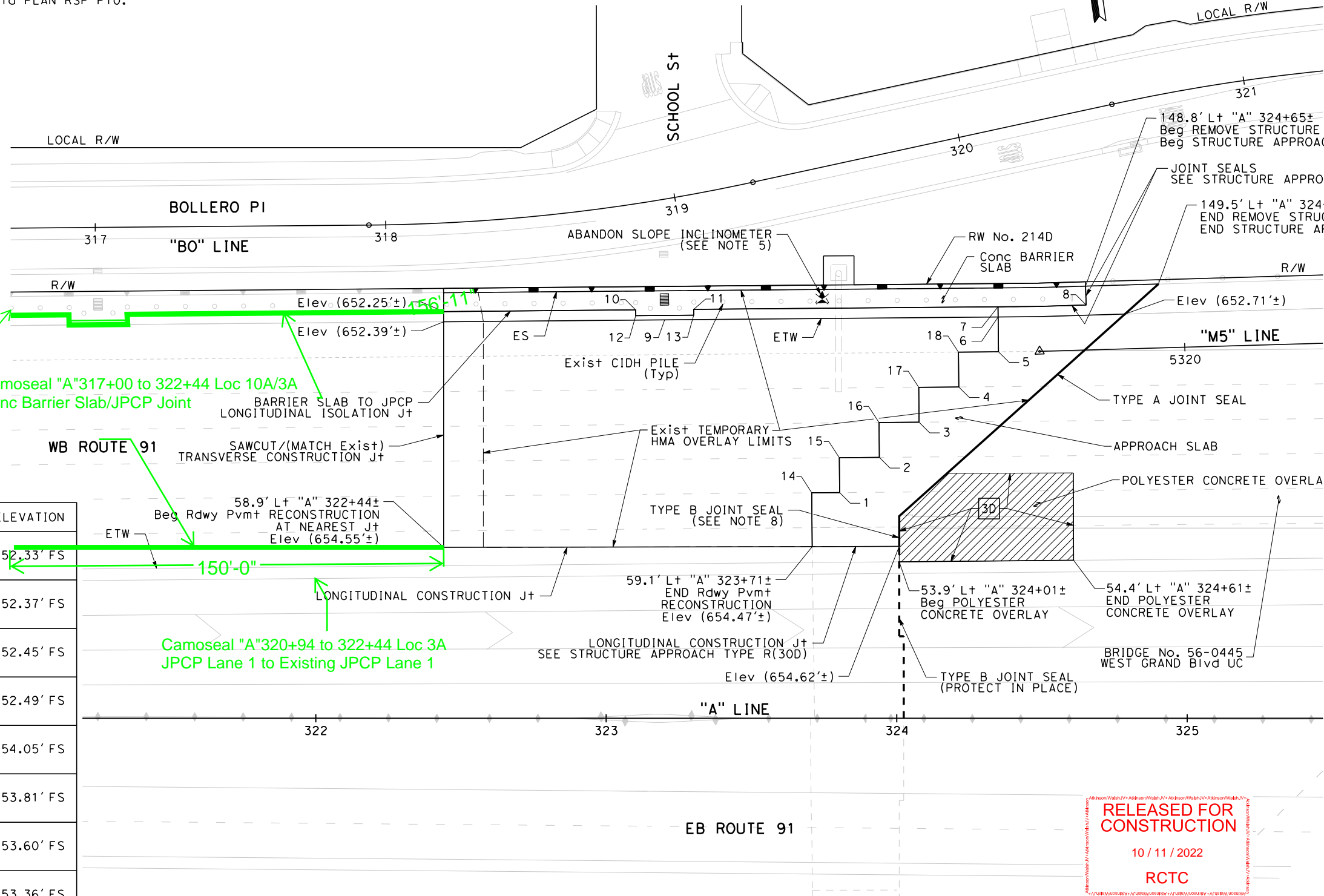
THE STATE OF CALIFORNIA OR ITS OFFICERS OR AGENTS SHALL NOT BE RESPONSIBLE FOR THE ACCURACY OR COMPLETENESS OF SCANNED COPIES OF THIS PLAN SHEET.

URS CORPORATION
 2020 EAST FIRST STREET,
 SUITE 400
 SANTA ANA, CA 92705

RIVERSIDE COUNTY
 TRANSPORTATION COMMISSION
 4080 LEMON STREET 3rd FLOOR
 RIVERSIDE, CA 92501

NOTES:

- FOR ACCURATE RIGHT OF WAY DATA, CONTACT RIGHT OF WAY ENGINEERING AT THE DISTRICT OFFICE.
- FOR LONGITUDINAL CONSTRUCTION J+ DETAILS, SEE REVISED S+d PLAN RSP P15.
- FOR BARRIER SLAB TO JPCP LONGITUDINAL ISOLATION J+ DETAILS, SEE MSE STANDARD DETAILS No. 2A.
- FOR TRANSVERSE CONSTRUCTION J+ DETAILS, SEE REVISED S+d PLAN RSP P10.
- ABANDON SLOPE INCLINOMETER, BACKFILL WITH SLURRY AND PROCESS PERMIT REQUIRED WITH COUNTY OF RIVERSIDE. SALVAGE LID AND DELIVER TO ENGINEER.
- ALIGN TRANSVERSE JOINTS BETWEEN NEW AND EXISTING JPCP.
- PAVEMENT SLAB WIDTH SHALL BE 4'-0" MINIMUM.
- TYPE B JOINT SEAL SPlicing IS PERMITTED ALONG LONGITUDINAL CONSTRUCTION J+ WITHIN RECONSTRUCTION LIMIT.



POINT	ELEVATION
1 77.7' Lt "A" 323+80	654.09' FS
2 89.8' Lt "A" 323+94	653.87' FS
3 102.0' Lt "A" 324+08	653.63' FS
4 114.1' Lt "A" 324+21	653.37' FS
5 126.2' Lt "A" 324+35	653.09' FS
6 138.2' Lt "A" 324+35	652.82' FS
7 147.7' Lt "A" 324+35	652.69' FS
8 142.3' Lt "A" 324+65	652.69' FS
9 137.2' Lt "A" 323+20	652.56' FS

POINT	ELEVATION
10 140.6' Lt "A" 323+10	652.33' FS
11 140.8' Lt "A" 323+30	652.37' FS
12 138.6' Lt "A" 323+10	652.45' FS
13 138.8' Lt "A" 323+30	652.49' FS
14 77.6' Lt "A" 323+71	654.05' FS
15 89.7' Lt "A" 323+80	653.81' FS
16 101.8' Lt "A" 323+94	653.60' FS
17 114.0' Lt "A" 324+08	653.36' FS
18 126.1' Lt "A" 324+21	653.08' FS

Camoseal

Camoseal "A" 317+00 to 322+44 Loc 10A/3A
 Conc Barrier Slab/JPCP Joint

Camoseal "A" 320+94 to 322+44 Loc 3A
 JPCP Lane 1 to Existing JPCP Lane 1

LEGEND:

POLYESTER CONCRETE

REMOVE Var THICKNESS HMA GRIND BRIDGE DECK AS NEEDED TO GET 1" ALL AROUND. CONSTRUCT Var THICKNESS POLYESTER CONCRETE OVERLAY (Min 1" THICKNESS)

SLOPE INCLINOMETER

RELEASED FOR CONSTRUCTION
 10/11/2022
 RCTC

ROADWAY PAVEMENT RECONSTRUCTION

CONSTRUCTION DETAILS (LOCATION 3A)

SCALE 1" = 20' **C-E121**

STATE OF CALIFORNIA - DEPARTMENT OF TRANSPORTATION

CONSULTANT: FUNCTIONAL SUPERVISOR: JEFFREY G. CHAPMAN

CALCULATED/DESIGNED BY: CHECKED BY:

REVISOR: MICHAEL LYNDE

DATE REVISION: FRANCIS GRONDO

DATE REVISION:

USERNAME => michael.lynde
 DGN FILE => ... \0800000136g0E121.dgn

RELATIVE BORDER SCALE IS IN INCHES

0 1 2 3

UNIT 2238

PROJECT NUMBER & PHASE

08000001361

DATE PLOTTED => 10/17/2022
 TIME PLOTTED => 11:26:00 AM

Dist	COUNTY	ROUTE	POST MILES TOTAL PROJECT	SHEET No.	TOTAL SHEETS
12 08	Org Riv	91 91,15	Var		

REGISTERED CIVIL ENGINEER **Francis J. Gbrondo** DATE 7-8-22

PLANS APPROVAL DATE

REGISTERED PROFESSIONAL ENGINEER
No. 71310
Exp. 12-31-23
CIVIL
STATE OF CALIFORNIA

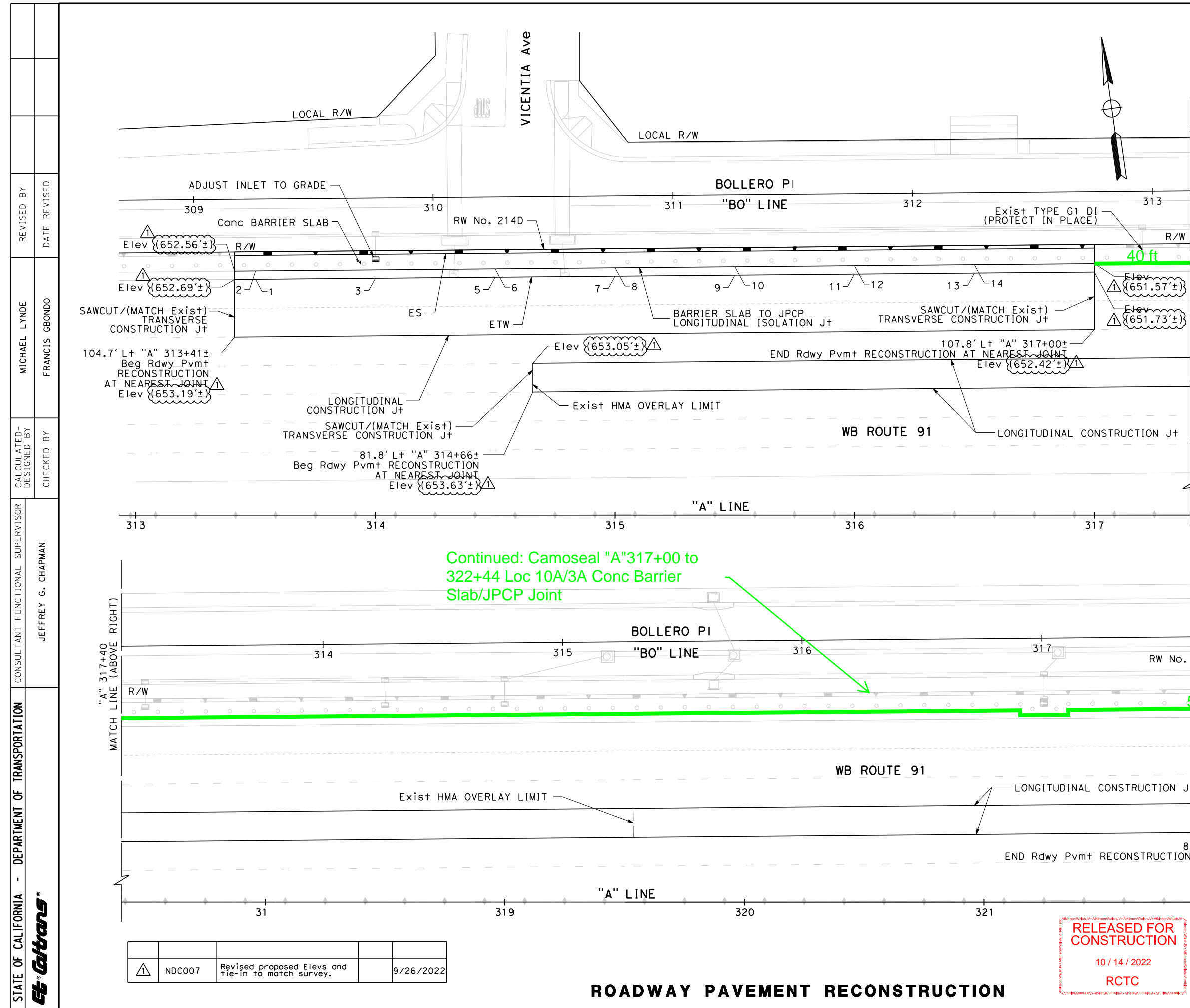
URS CORPORATION
2020 EAST FIRST STREET,
SUITE 400
SANTA ANA, CA 92705

RIVERSIDE COUNTY
TRANSPORTATION COMMISSION
4080 LEMON STREET 3rd FLOOR
RIVERSIDE, CA 92501

- NOTES:**
- FOR ACCURATE RIGHT OF WAY DATA, CONTACT RIGHT OF WAY ENGINEERING AT THE DISTRICT OFFICE.
 - FOR LONGITUDINAL CONSTRUCTION J+ DETAILS, SEE REVISED Std PLAN RSP P15.
 - FOR BARRIER SLAB TO JPCP LONGITUDINAL ISOLATION JOINT DETAIL, SEE MSE STANDARD DETAILS No. 2A.
 - FOR TRANSVERSE CONSTRUCTION J+ DETAILS, SEE REVISED Std PLAN RSP P10.
 - ALIGN TRANSVERSE JOINTS BETWEEN NEW AND EXISTING JPCP.
 - PAVEMENT SLAB WIDTH SHALL BE 4'-0" MINIMUM.

POINT	ELEVATION
13 131.4' Lt "A" 316+50	651.86' FS
14 134.9' Lt "A" 316+50	651.67' FS

POINT	ELEVATION
1 128.8' Lt "A" 313+50	652.67' FS
2 132.3' Lt "A" 313+50	652.50' FS
3 129.2' Lt "A" 314+00	652.53' FS
5 129.6' Lt "A" 314+50	652.40' FS
6 133.1' Lt "A" 314+50	652.23' FS
7 130.1' Lt "A" 315+00	652.27' FS
8 133.6' Lt "A" 315+00	652.09' FS
9 130.5' Lt "A" 315+50	652.13' FS
10 134.0' Lt "A" 315+50	651.95' FS
11 130.9' Lt "A" 316+00	652.00' FS
12 134.4' Lt "A" 316+00	651.81' FS



▲	NDC007	Revised proposed Elevs and tie-in to match survey.	9/26/2022
---	--------	--	-----------

RELEASED FOR CONSTRUCTION
10 / 14 / 2022
RCTC

CONSTRUCTION DETAILS
(LOCATION 10A)
SCALE 1" = 20'
C-D111

NOTES:

1. FOR ACCURATE RIGHT OF WAY DATA, CONTACT RIGHT OF WAY ENGINEERING AT THE DISTRICT OFFICE.
2. CONTRACTOR SHALL PROTECT IN PLACE ALL HISTORIC FEATURES WITHIN THE GRAND Blvd R/W NOT DIRECTLY IMPACTED BY THE PROPOSED IMPROVEMENTS.

Camoseal "M5" 5328+70 to 5331+15
Loc 3B Conc. Barrier Slab to JPCP
Joint

SR911.11x17.dwg					
REVISIONS	REVISED BY	DATE REVISED			
	KANDICE NGUYEN	DANNY WALDEN			
	CALCULATED/DESIGNED BY	CHECKED BY			
	RICHARD HART				
	CONSULTANT FUNCTIONAL SUPERVISOR				
	DEPARTMENT OF TRANSPORTATION				
	STATE OF CALIFORNIA				

Dist	COUNTY	ROUTE	POST MILES TOTAL PROJECT	SHEET No.	TOTAL SHEETS
1208	Ora Riv	91	Var		

REGISTERED CIVIL ENGINEER DATE 1-23-15

REGISTERED PROFESSIONAL ENGINEER
MATTHEW J KORVE
No. 63248
Exp. 6-30-16
CIVIL
STATE OF CALIFORNIA

PLANS APPROVAL DATE

THE STATE OF CALIFORNIA OR ITS OFFICERS OR AGENTS SHALL NOT BE RESPONSIBLE FOR THE ACCURACY OR COMPLETENESS OF SCANNED COPIES OF THIS PLAN SHEET.

URS CORPORATION
2020 EAST FIRST STREET,
SUITE 400
SANTA ANA, CA 92705

RIVERSIDE COUNTY
TRANSPORTATION COMMISSION
4080 LEMON STREET 3rd FLOOR
RIVERSIDE, CA 92501

2	NDC280	Removed SW 216A	DL88	12/22/2015
1	NDC212	Revised Section	RF1438	08/14/2015

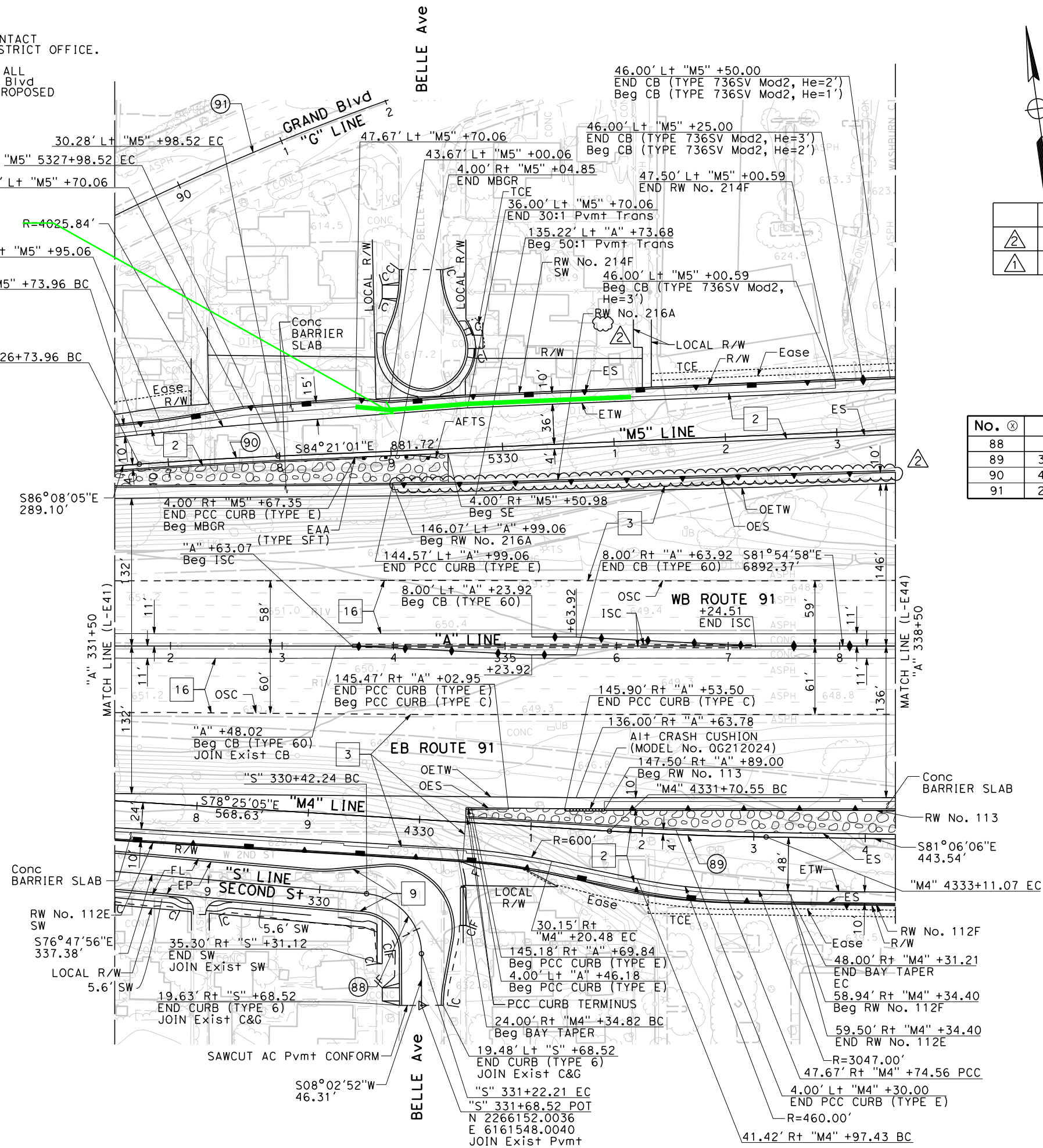
CURVE DATA

No. @	R	Δ	T	L
88	54.00'	84°50'48"	49.35'	79.97'
89	3000.00'	02°41'01"	70.27'	140.52'
90	4000.00'	01°47'03"	62.29'	124.57'
91	2326.80'	201°56'16"	N/A	8200.76'

RELEASED FOR CONSTRUCTION

Mar 04, 2016

Atkinson/Walsh JV



APPROVED BY: CITY OF CORONA PUBLIC WORKS

NELSON D NELSON, P.E.
CITY ENGINEER
R.C.E. 54435

DATE: _____

LAYOUT

SCALE 1" = 50'

L-E42

Dist	COUNTY	ROUTE	POST MILES TOTAL PROJECT	SHEET No.	TOTAL SHEETS
1208	Orange	91	Var		

REGISTERED CIVIL ENGINEER
 9-2-22 DATE
 FRANCIS J. GBONDO
 No. 71310
 Exp. 12-31-23
 CIVIL
 STATE OF CALIFORNIA

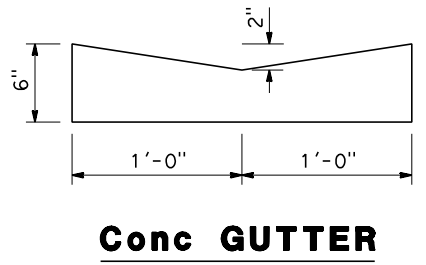
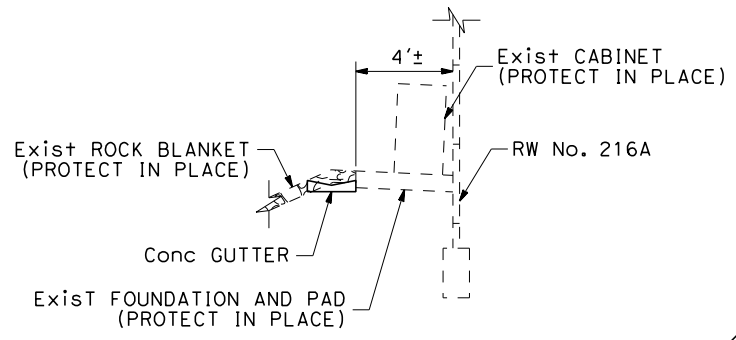
URS CORPORATION
 2020 EAST FIRST STREET,
 SUITE 400
 SANTA ANA, CA 92705

RIVERSIDE COUNTY
 TRANSPORTATION COMMISSION
 4080 LEMON STREET 3rd FLOOR
 RIVERSIDE, CA 92501

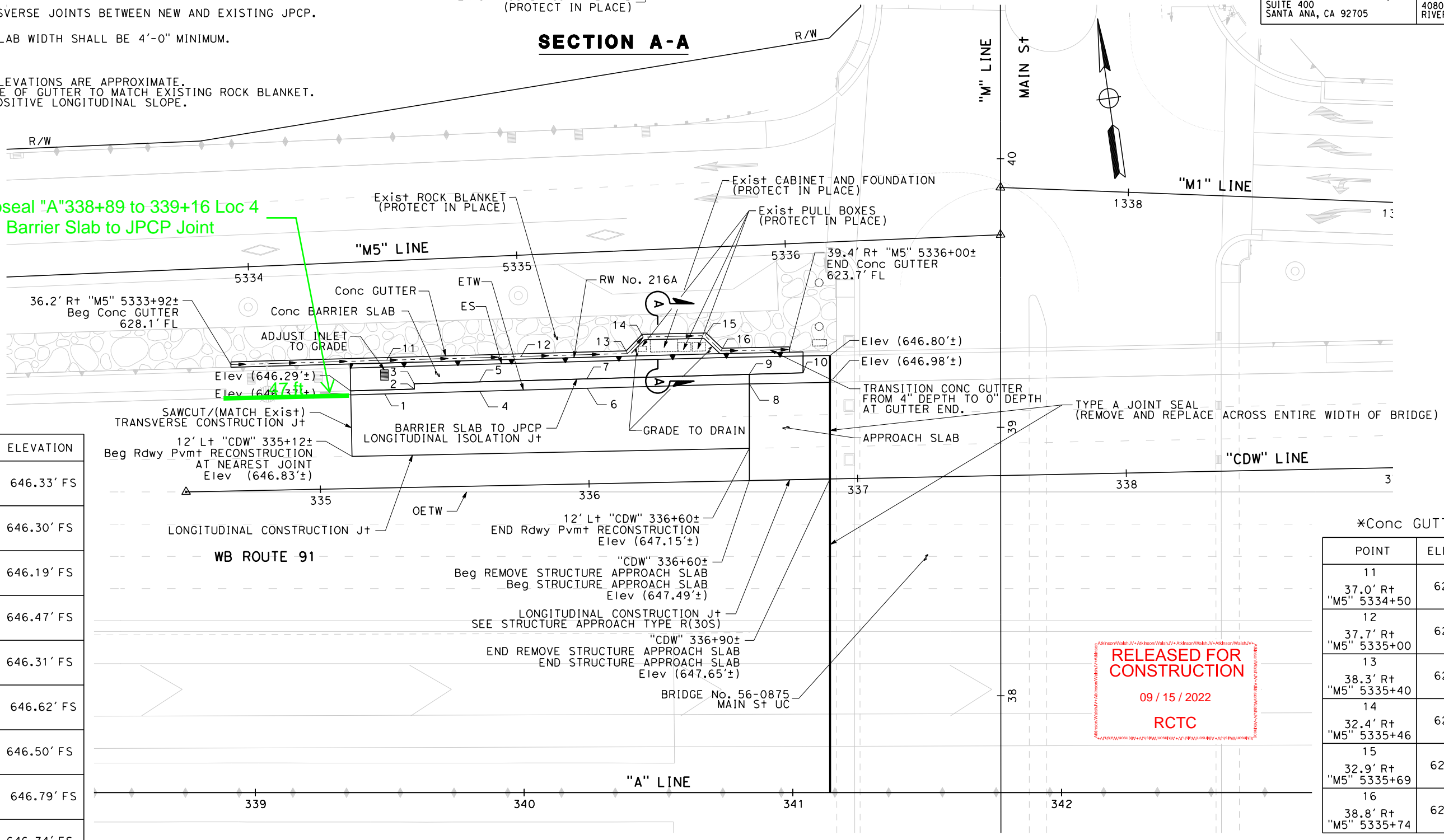
NOTES:

- FOR ACCURATE RIGHT OF WAY DATA, CONTACT RIGHT OF WAY ENGINEERING AT THE DISTRICT OFFICE.
- FOR LONGITUDINAL CONSTRUCTION J+ DETAILS, SEE REVISED S+D PLAN RSP P15.
- FOR BARRIER SLAB TO JPCP LONGITUDINAL ISOLATION J+ DETAILS, SEE MSE STANDARD DETAILS No. 2B.
- FOR TRANSVERSE CONSTRUCTION J+ DETAILS, SEE REVISED S+D PLAN RSP P10.
- ALIGN TRANSVERSE JOINTS BETWEEN NEW AND EXISTING JPCP.
- PAVEMENT SLAB WIDTH SHALL BE 4'-0" MINIMUM.

* - FLOWLINE ELEVATIONS ARE APPROXIMATE. ADJUST EDGE OF GUTTER TO MATCH EXISTING ROCK BLANKET. MAINTAIN POSITIVE LONGITUDINAL SLOPE.



Camoseal "A" 338+89 to 339+16 Loc 4
 Conc. Barrier Slab to JPCP Joint



POINT	ELEVATION
1 35.0' Lt "CDW" 335+25	646.33' FS
2 36.6' Lt "CDW" 335+36	646.30' FS
3 38.6' Lt "CDW" 335+36	646.19' FS
4 35.3' Lt "CDW" 335+60	646.47' FS
5 38.8' Lt "CDW" 335+60	646.31' FS
6 35.6' Lt "CDW" 336+00	646.62' FS
7 39.1' Lt "CDW" 336+00	646.50' FS
8 36.0' Lt "CDW" 336+60	646.79' FS
9 39.6' Lt "CDW" 336+60	646.74' FS
10 39.7' Lt "CDW" 336+80	646.82' FS

*Conc GUTTER

POINT	ELEVATION
11 37.0' Rt "M5" 5334+50	626.2' FL
12 37.7' Rt "M5" 5335+00	625.3' FL
13 38.3' Rt "M5" 5335+40	624.8' FL
14 32.4' Rt "M5" 5335+46	624.5' FL
15 32.9' Rt "M5" 5335+69	624.4' FL
16 38.8' Rt "M5" 5335+74	624.3' FL

RELEASED FOR CONSTRUCTION
 09/15/2022
 RCTC

ROADWAY PAVEMENT RECONSTRUCTION

CONSTRUCTION DETAILS (LOCATION 4)

SCALE 1" = 20'

C-E123

STATE OF CALIFORNIA - DEPARTMENT OF TRANSPORTATION
 FRANCIS GBONDO
 MICHAEL LYNDE
 JEFFREY G. CHAPMAN

DATE PLOTTED => 9/2/2022
 TIME PLOTTED => 1:54:09 PM

NOTES:

- 1. FOR ACCURATE RIGHT OF WAY DATA, CONTACT RIGHT OF WAY ENGINEERING AT THE DISTRICT OFFICE.
- 2. CONTRACTOR SHALL PROTECT IN PLACE ALL HISTORIC FEATURES WITHIN THE GRAND Blvd R/W NOT DIRECTLY IMPACTED BY THE PROPOSED IMPROVEMENTS.

EAST GRAND Blvd UC RIGHT (WIDEN)
Br No. 56-0364

CURVE DATA

No. @	R	Δ	T	L
91	2326.80'	201°56'16"	N/A	8200.76'
95	2200.00'	07°58'48"	153.45'	306.41'
96	2200.00'	09°15'06"	178.00'	355.23'
97	1900.00'	04°45'48"	79.02'	157.96'
103	3000.00'	03°14'48"	85.02'	170.00'
104	3200.00'	33°07'43"	951.79'	1850.25'
105	2000.00'	09°52'06"	172.66'	344.47'
111	3017.00'	27°14'05"	730.86'	1434.09'

Dist	COUNTY	ROUTE	POST MILES TOTAL PROJECT	SHEET No.	TOTAL SHEETS
1208	Ora Riv	91	Var		

REGISTERED CIVIL ENGINEER
DATE: 1-23-15
PLANS APPROVAL DATE

STATE OF CALIFORNIA
REGISTERED PROFESSIONAL ENGINEER
No. 63248
Exp. 6-30-16
CIVIL

URS CORPORATION
2020 EAST FIRST STREET,
SUITE 400
SANTA ANA, CA 92705

RIVERSIDE COUNTY
TRANSPORTATION COMMISSION
4080 LEMON STREET 3rd FLOOR
RIVERSIDE, CA 92501

RELEASED FOR CONSTRUCTION

Jul 19, 2016

Atkinson/Walsh JV

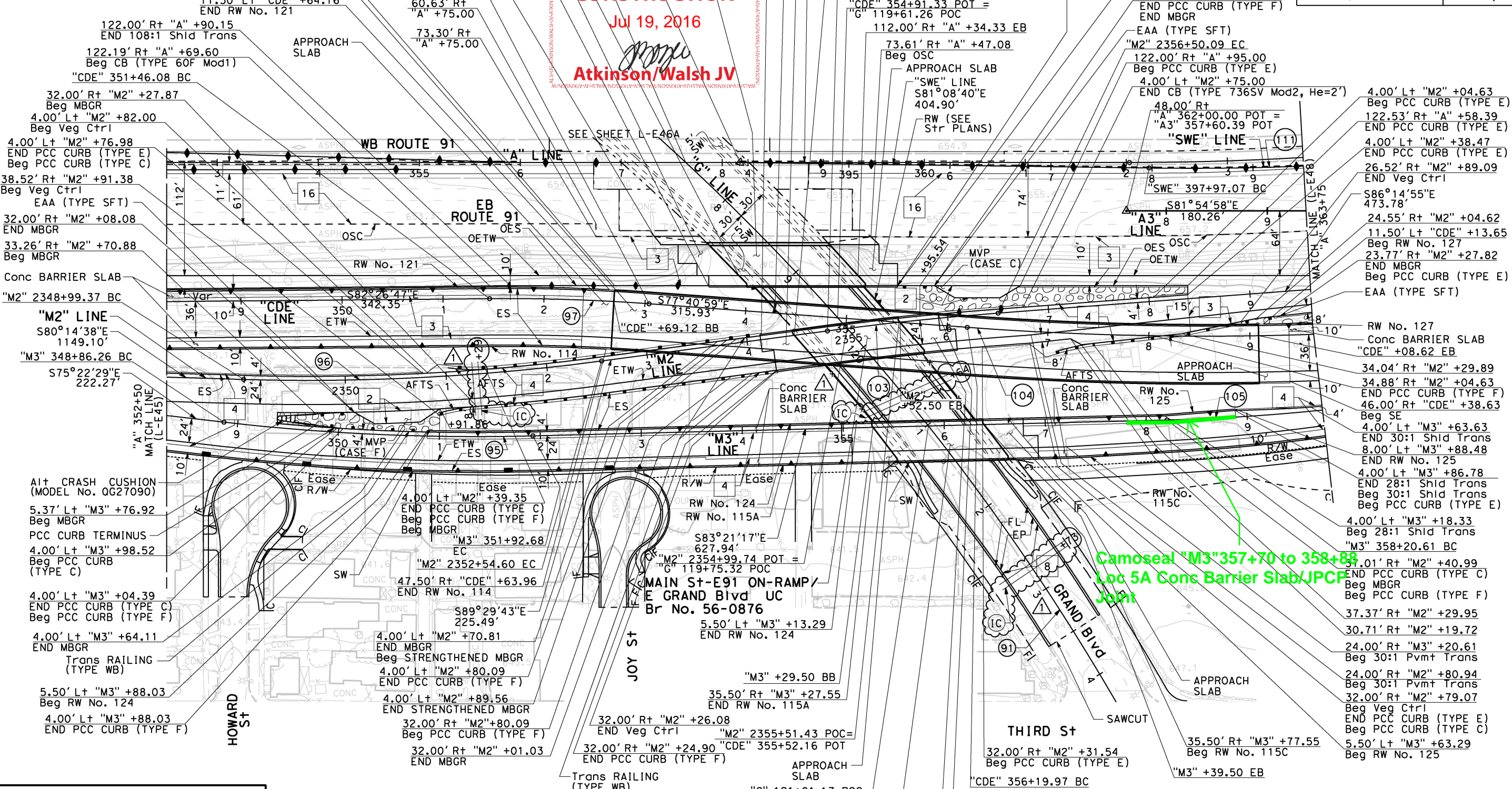
REVISOR: KANDICE NGUYEN, DANNY WALDEN, RICHARD HART

CHECKED BY: DANNY WALDEN, RICHARD HART

DESIGNED BY: RICHARD HART

DATE: 06/29/2016

E91-N15/S15 CONNECTOR
Br No. 56-0870G



APPROVED BY: CITY OF CORONA PUBLIC WORKS

DATE: _____

NELSON D NELSON, P.E.
CITY ENGINEER
R.C.E. 54435

1	NDC325	IC Revisions	06/29/2016
---	--------	--------------	------------

MAIN St-15 ON-RAMP/
E GRAND Blvd UC
Br No. 56-0868

Camoseal "M3" 357+70 to 358+88
Loc 5A Conc Barrier Slab/JPCF
Joint

LAYOUT
SCALE 1"= 50'
L-E46B

Dist	COUNTY	ROUTE	POST MILES TOTAL PROJECT	SHEET No.	TOTAL SHEETS
1208	Riverside	91	Var		

REGISTERED CIVIL ENGINEER 11-2-22 DATE

PLANS APPROVAL DATE

THE STATE OF CALIFORNIA OR ITS OFFICERS OR AGENTS SHALL NOT BE RESPONSIBLE FOR THE ACCURACY OR COMPLETENESS OF SCANNED COPIES OF THIS PLAN SHEET.

URS CORPORATION
2020 EAST FIRST STREET,
SUITE 400
SANTA ANA, CA 92705

RIVERSIDE COUNTY
TRANSPORTATION COMMISSION
4080 LEMON STREET 3rd FLOOR
RIVERSIDE, CA 92501

NOTES:

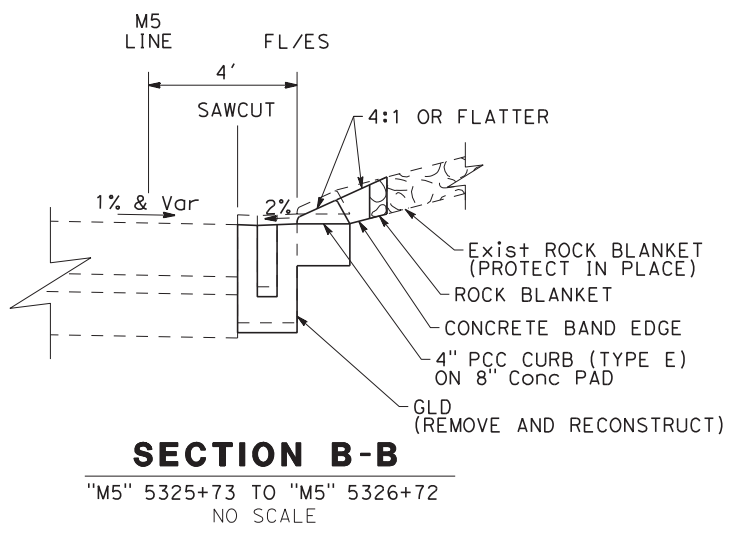
- FOR ACCURATE RIGHT OF WAY DATA, CONTACT RIGHT OF WAY ENGINEERING AT THE DISTRICT OFFICE.
- FOR LONGITUDINAL CONSTRUCTION J+ DETAILS, SEE REVISED S+D PLAN RSP P15.
- FOR BARRIER SLAB TO JPCP LONGITUDINAL ISOLATION J+ DETAIL, SEE MSE STANDARD DETAILS No. 2A.
- FOR TRANSVERSE CONSTRUCTION J+ DETAILS, SEE REVISED S+D PLAN RSP P10.
- ALIGN TRANSVERSE JOINTS BETWEEN NEW AND EXISTING JPCP.
- PAVEMENT SLAB WIDTH SHALL BE 4'-0" MINIMUM.
- FOR GLD DETAILS, SEE DRAINAGE DETAILS SHEET DD-6.
- FOR ROCK BLANKET DETAILS, SEE CONSTRUCTION DETAILS SHEET C-3.
- FOR PCC CURB (TYPE E) DETAILS, SEE CONSTRUCTION DETAILS SHEET C-17.

LEGEND:

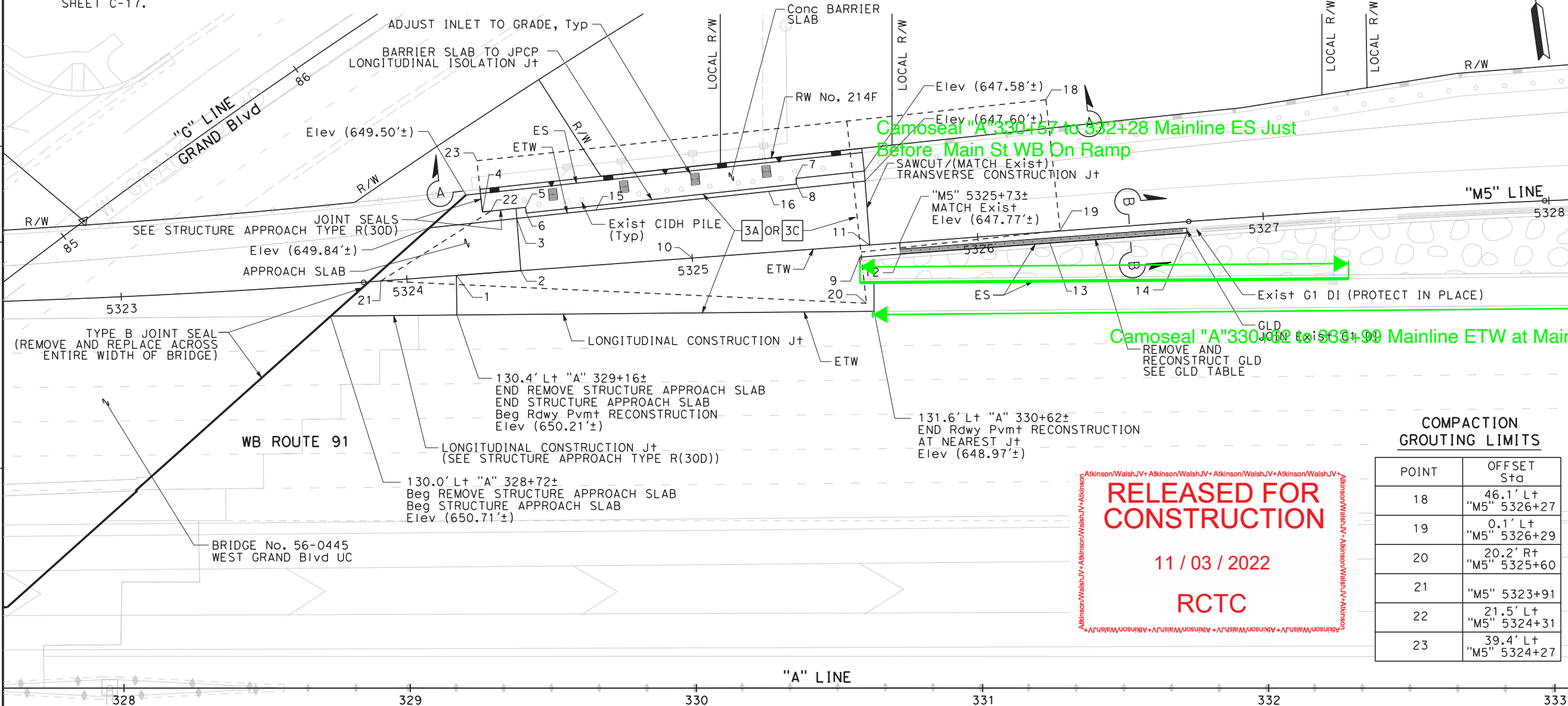
----- LIMITS OF COMPACTION GROUTING GROUND IMPROVEMENTS

GLD TABLE

LINE	DESCRIPTION	STATION	DEPTH (in)	LENGTH (ft)
M5	BEGINNING	"M5" 5325+73	10.5	99
	END	"M5" 5326+72	10.5	
	TRANSITION	"M5" 5326+74±		2.00



POINT	ELEVATION	
1	650.02' FS	
"M5" 5324+17		
2	649.73' FS	
"M5" 5324+40		
3	18.3' Lt	
"M5" 5324+40	649.56' FS	
4	21.4' Lt	
"M5" 5324+28	649.58' FS	
5	21.9' Lt	
"M5" 5324+43	649.41' FS	
6	19.9' Lt	
"M5" 5324+43	649.47' FS	
7	25.1' Lt	
"M5" 5325+38	647.91' FS	
8	23.1' Lt	
"M5" 5325+38	647.92' FS	
9	4' Rt	
"M5" 5325+58	(648.08') FS	
10	"M5" 5325+00	648.96' FS
11	"M5" 5325+62	(647.86) FS
12	3.7' Rt	(647.92') FL
"M5" 5325+73		
13	3.7' Rt	647.30' FL
"M5" 5326+25		
14	3.6' Rt	(646.84') FS
"M5" 5326+73		
15	19.3' Rt	649.17' FS
"M5" 5324+68		
16	21.3' Rt	648.06' FS
"M5" 5325+28		



Camoseal "A" 330+57 to 332+28 Mainline ES Just Before Main St WB On Ramp

Camoseal "A" 330+02 to 333+99 Mainline ETW at Main St WB On Ramp Gore

RELEASED FOR CONSTRUCTION
11 / 03 / 2022
RCTC

COMPACTION GROUTING LIMITS

POINT	OFFSET S+D	
18	46.1' Lt	
"M5" 5326+27		
19	0.1' Lt	
"M5" 5326+29		
20	20.2' Rt	
"M5" 5325+60		
21	"M5" 5323+91	
22	21.5' Lt	
"M5" 5324+31		
23	39.4' Lt	
"M5" 5324+27		

SECTION A-A

NO SCALE

ROADWAY PAVEMENT RECONSTRUCTION

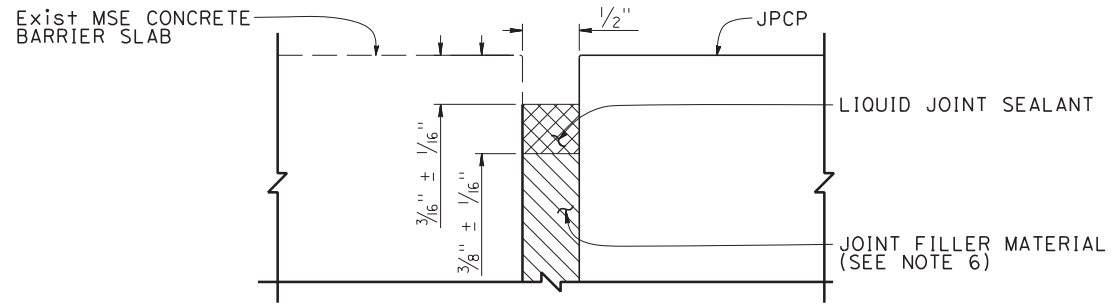
CONSTRUCTION DETAILS (LOCATION 3B)

SCALE 1" = 20'

C-E122

NOTES:

1. FOR ACCURATE RIGHT OF WAY DATA, CONTACT RIGHT OF WAY ENGINEERING AT THE DISTRICT OFFICE.
2. FOR LONGITUDINAL CONSTRUCTION J+ DETAILS, SEE REVISED S+D PLAN RSP P15.
3. FOR TRANSVERSE CONSTRUCTION J+ DETAILS, SEE REVISED S+D PLAN RSP P10.
4. PAVEMENT SLAB WIDTH SHALL BE 4'-0" MINIMUM.
5. ALIGN TRANSVERSE JOINTS BETWEEN NEW AND EXISTING JPCP.
6. EXTEND JOINT FILLER MATERIAL TO BOTTOM OF JPCP PAVEMENT SECTION.



BARRIER SLAB TO JPCP LONGITUDINAL ISOLATION JOINT DETAIL

Dist	COUNTY	ROUTE	POST MILES TOTAL PROJECT	SHEET No.	TOTAL SHEETS
12 08	Oran Riverside	91 91,15	Var		

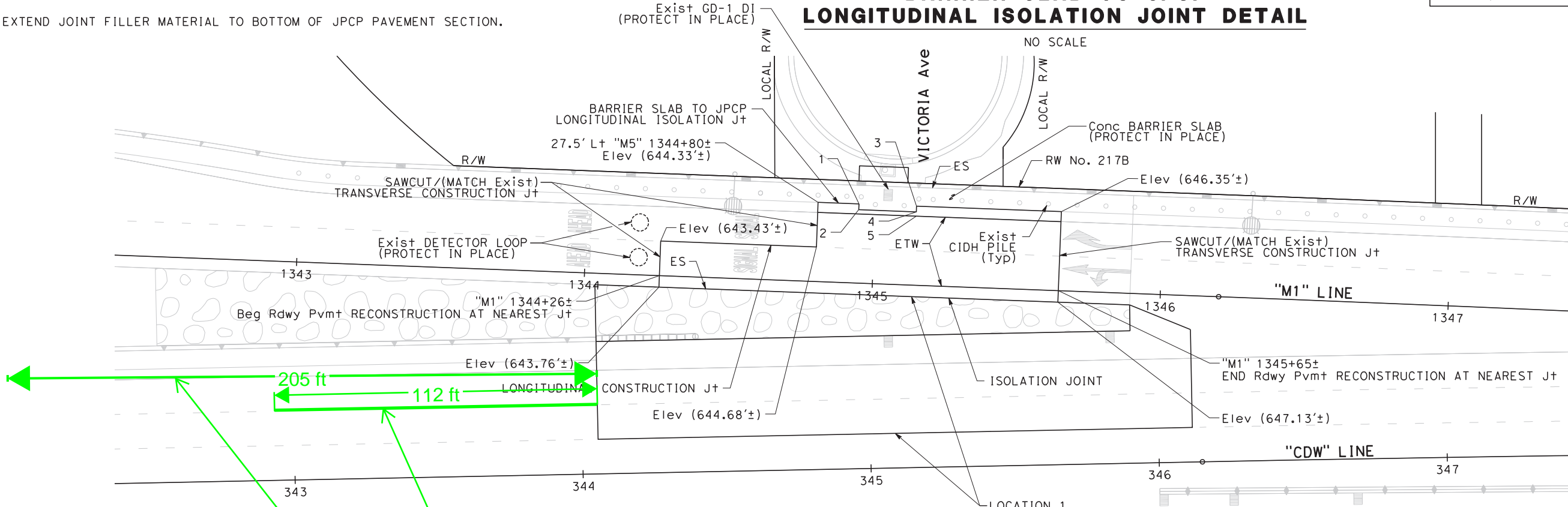
REGISTERED CIVIL ENGINEER
 11-2-22 DATE
 FRANCIS J. GBONDO
 No. 71310
 Exp. 12-31-23
 CIVIL
 STATE OF CALIFORNIA

PLANS APPROVAL DATE

THE STATE OF CALIFORNIA OR ITS OFFICERS OR AGENTS SHALL NOT BE RESPONSIBLE FOR THE ACCURACY OR COMPLETENESS OF SCANNED COPIES OF THIS PLAN SHEET.

URS CORPORATION
 2020 EAST FIRST STREET,
 SUITE 400
 SANTA ANA, CA 92705

RIVERSIDE COUNTY
 TRANSPORTATION COMMISSION
 4080 LEMON STREET 3rd FLOOR
 RIVERSIDE, CA 92501



Camoseal "A" 346+15 to 348+20 Loc 1 "CDW" ETW at Main St WB Off Ramp Gore

Camoseal "CDW" 342+93 to 344+05 Loc 1 Between Lane No. 2 and Lane No. 3

WB ROUTE 91

RELEASED FOR CONSTRUCTION
 11 / 03 / 2022
RCTC

POINT	ELEVATION
1	(644.71') FS
2	(644.76') FS
3	(645.14') FS
4	(645.23') FS
5	(645.26') FS
"M1" 24' L+ 1345+14	645.26' FS

ROADWAY PAVEMENT RECONSTRUCTION

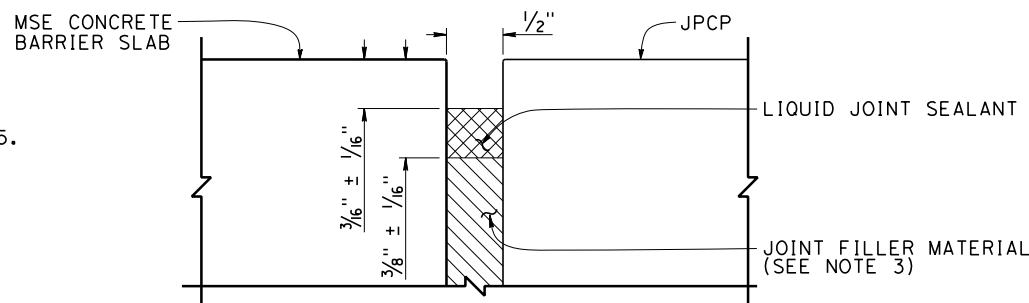
**CONSTRUCTION DETAILS
 LOCATION 1A
 SCALE 1" = 20' C-E128**

STATE OF CALIFORNIA - DEPARTMENT OF TRANSPORTATION
 Caltrans

LAST REVISION DATE PLOTTED => 11/2/2022 00-00-00 TIME PLOTTED => 9:52:05 AM

NOTES:

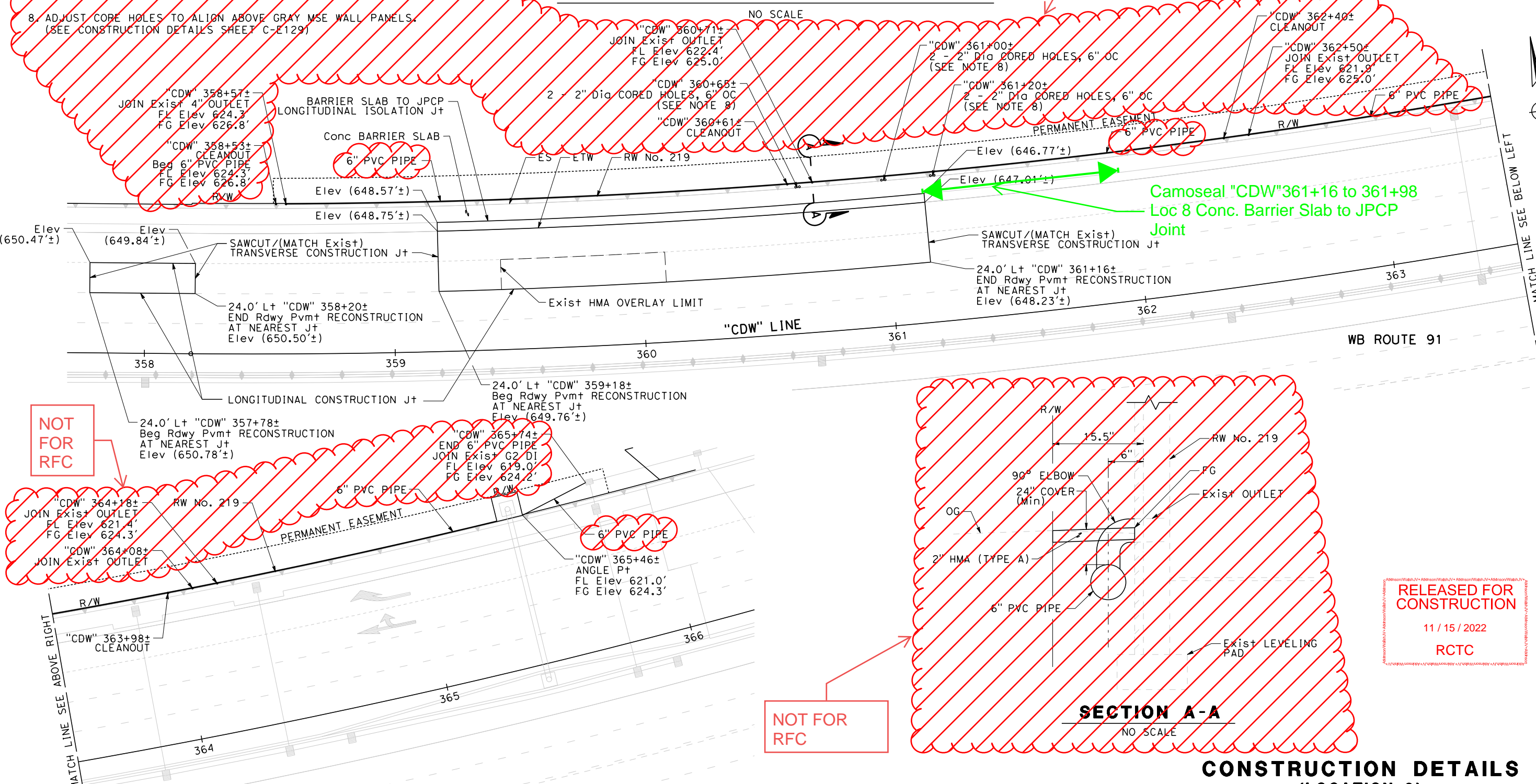
1. FOR ACCURATE RIGHT OF WAY DATA, CONTACT RIGHT OF WAY ENGINEERING AT THE DISTRICT OFFICE.
2. FOR LONGITUDINAL CONSTRUCTION J+ DETAILS, SEE REVISED S+D PLAN RSP P15.
3. EXTEND JOINT FILLER MATERIAL TO BOTTOM OF JPCP PAVEMENT SECTION.
4. FOR TRANSVERSE CONSTRUCTION J+ DETAILS, SEE REVISED S+D PLAN RSP P10.
5. PAVEMENT SLAB WIDTH SHALL BE 4'-0" MINIMUM.
6. ALIGN TRANSVERSE JOINTS BETWEEN NEW AND EXISTING JPCP.
7. CLEANOUT SHALL CONSIST OF A 6" PVC WYE WITH 1/8 BEND AND 6" PVC PLUG, OR APPROVED EQUAL.
8. ADJUST CORE HOLES TO ALIGN ABOVE GRAY MSE WALL PANELS. (SEE CONSTRUCTION DETAILS SHEET C-E129)



BARRIER SLAB TO JPCP LONGITUDINAL ISOLATION JOINT DETAIL

NOT FOR RFC

Dist	COUNTY	ROUTE	POST MILES TOTAL PROJECT	SHEET No.	TOTAL SHEETS
1208	Oran	91	Var		
REGISTERED CIVIL ENGINEER			DATE	11-10-22	
FRANCIS J. GBONDO			No. 71310		
PLANS APPROVAL DATE			Exp. 12-31-23		
THE STATE OF CALIFORNIA OR ITS OFFICERS OR AGENTS SHALL NOT BE RESPONSIBLE FOR THE ACCURACY OR COMPLETENESS OF SCANNED COPIES OF THIS PLAN SHEET.					
URS CORPORATION 2020 EAST FIRST STREET, SUITE 400 SANTA ANA, CA 92705			RIVERSIDE COUNTY TRANSPORTATION COMMISSION 4080 LEMON STREET 3rd FLOOR RIVERSIDE, CA 92501		



NOT FOR RFC

NOT FOR RFC

SECTION A-A

RELEASED FOR CONSTRUCTION
11/15/2022
RCTC

CONSTRUCTION DETAILS (LOCATION 8)

SCALE 1" = 20'

C-E125

STATE OF CALIFORNIA - DEPARTMENT OF TRANSPORTATION
 CONSULTANT: FUNCTIONAL SUPERVISOR: JEFFREY G. CHAPMAN
 CALCULATED/DESIGNED BY: MICHAEL LYNDE
 CHECKED BY: FRANCIS GBONDO
 REVISIONS: (None listed)