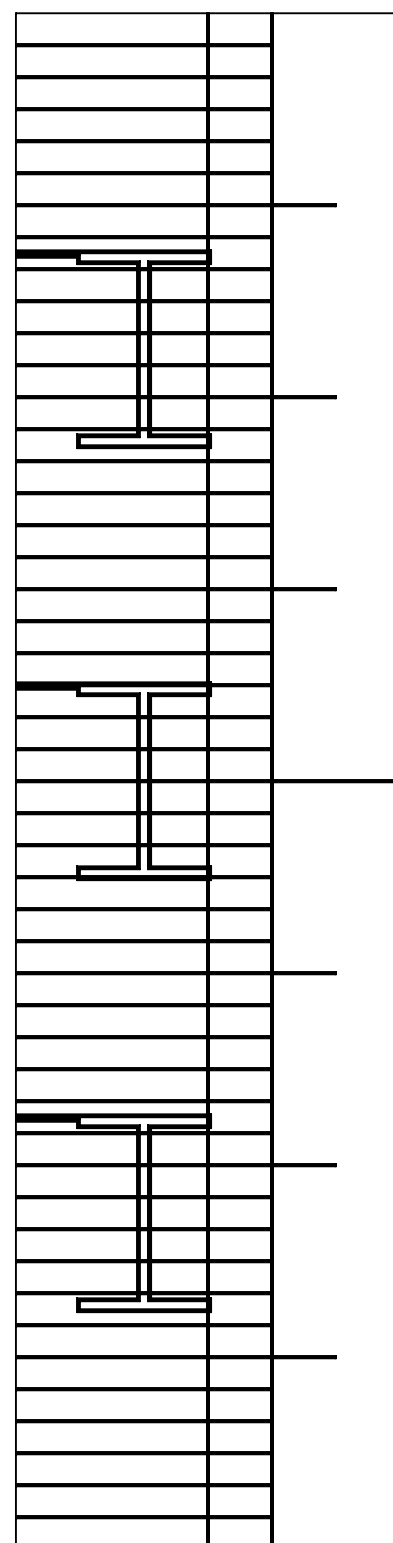


8 7 6 5 4 3 2 1

D
C
B
A

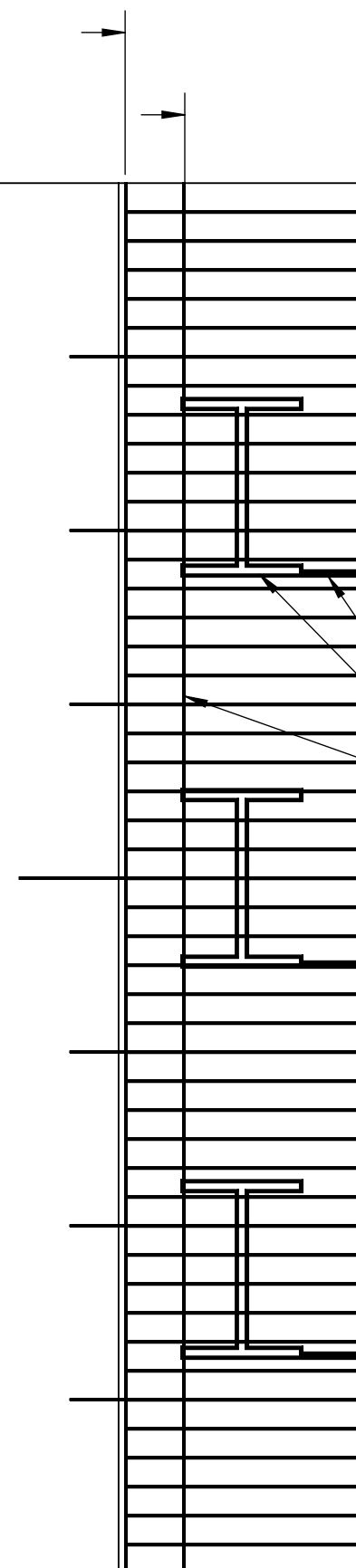


www.traffixdevices.com
 (949) 361-5663
 WEED MAT®
 TRAFFIX DEVICES

PATENT PENDING

PATENT PENDING

TRAFFIX DEVICES
 WEED MAT®
 (949) 361-5663
 www.traffixdevices.com



8" LAP FOR
 WEED MATS
 6" WIDE
 NOTCH
 1"

SCORE MARKS TO EASE CUTTING FOR
 PROPER FIT AROUND VARIOUS POST
 CONFIGURATIONS

CR4365 WEED MAT, 45-1/2 X 48

UNLESS OTHERWISE SPECIFIED:
 ALL DIMENSIONS ARE IN INCHES [mm]
 TOLERANCES:
 DECIMAL: 0.0 + .0625" [1.59mm]
 0.00 + .032" [0.81mm]
 0.000 ± .015" [0.38mm]
 DEGREES: ± 0.5°

**Traffix
 Devices Inc.**  160 Avenida La Pata
 San Clemente, CA 92673
 (949) 361-5663
 FAX (949) 361-9205
 www.traffixdevices.com

TITLE:
**WEED MAT GASKET
 INSTALLATION**

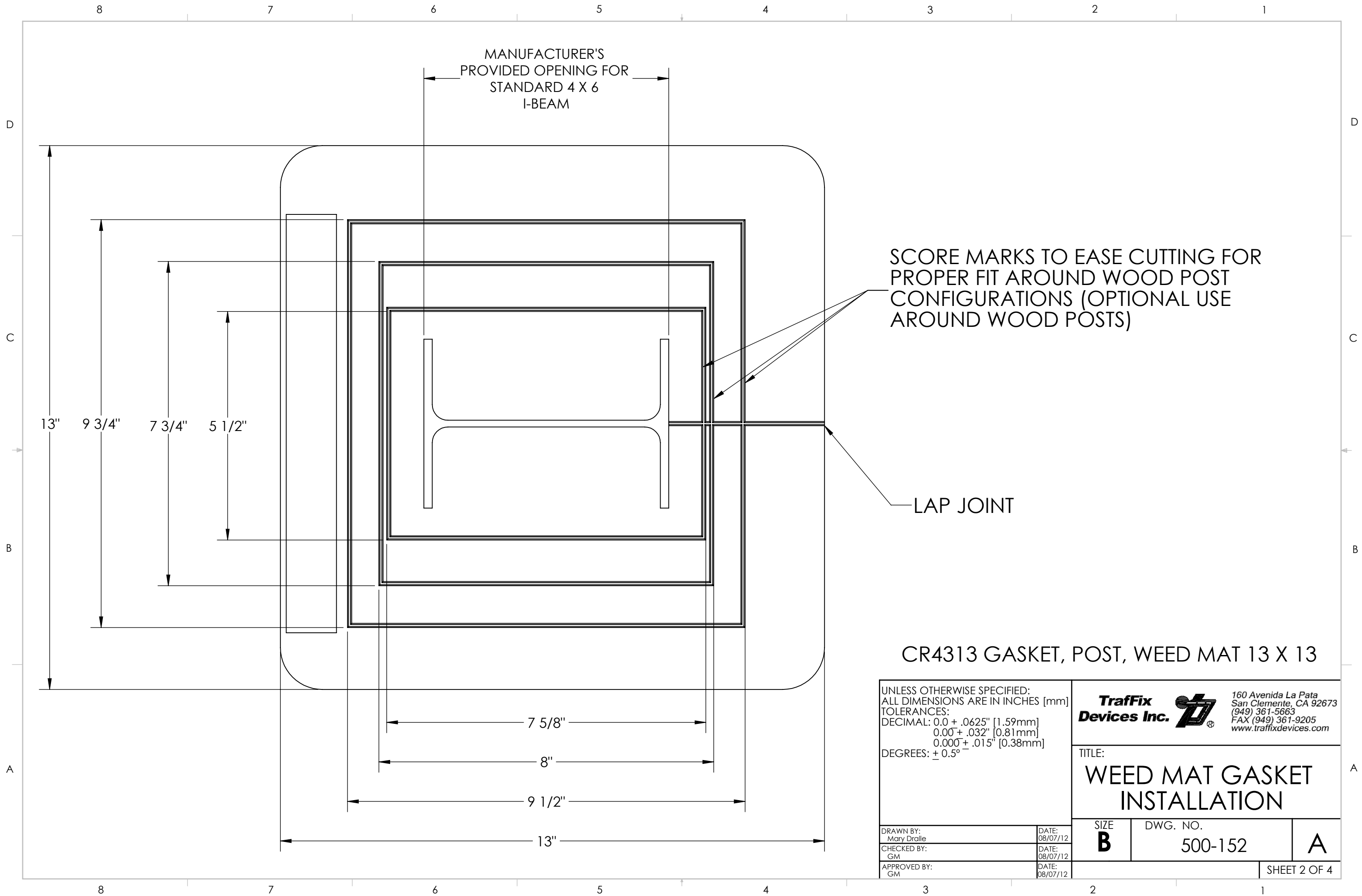
DRAWN BY:
 Mary Dralle
 CHECKED BY:
 GM
 APPROVED BY:
 GM

DATE:
 08/07/12
 DATE:
 08/07/12
 DATE:
 08/07/12

SIZE **B** DWG. NO. 500-152 **A**

SHEET 1 OF 4

8 7 6 5 4 3 2 1



MANUFACTURER'S
PROVIDED OPENING FOR
STANDARD 4 X 6
I-BEAM

SCORE MARKS TO EASE CUTTING FOR
PROPER FIT AROUND WOOD POST
CONFIGURATIONS (OPTIONAL USE
AROUND WOOD POSTS)

LAP JOINT

CR4313 GASKET, POST, WEED MAT 13 X 13

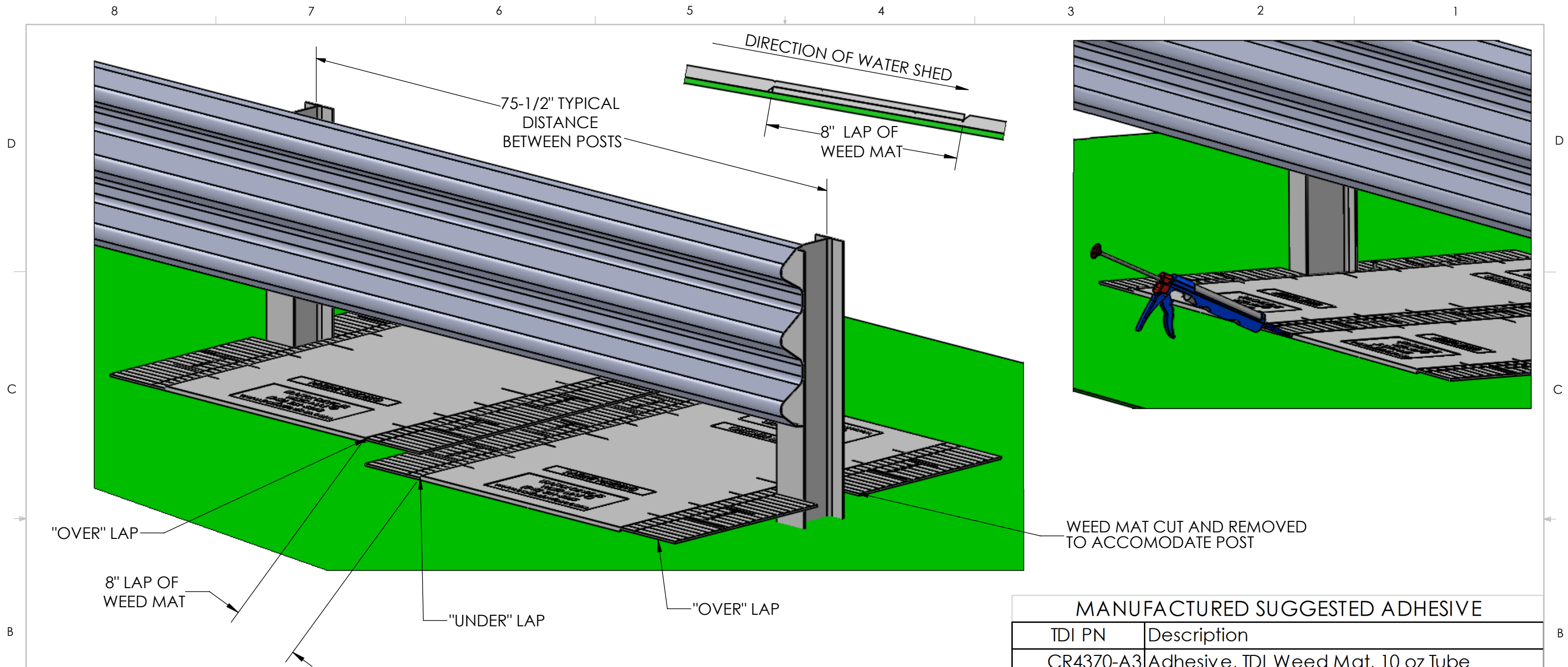
UNLESS OTHERWISE SPECIFIED:
ALL DIMENSIONS ARE IN INCHES [mm]
TOLERANCES:
DECIMAL: 0.0 + .0625" [1.59mm]
 0.00 + .032" [0.81mm]
 0.000 ± .015" [0.38mm]
DEGREES: ± 0.5°

**TraFFix
Devices Inc.**  160 Avenida La Pata
San Clemente, CA 92673
(949) 361-5663
FAX (949) 361-9205
www.traffixdevices.com

TITLE:
**WEED MAT GASKET
INSTALLATION**

DRAWN BY: Mary Dralle	DATE: 08/07/12
CHECKED BY: GM	DATE: 08/07/12
APPROVED BY: GM	DATE: 08/07/12

SIZE B	DWG. NO. 500-152	A
		SHEET 2 OF 4



STEP 1: POSITION THE WEED MATE FOR DESIRED SET BACK FROM ROAD AND SO THAT WATER IS ALLOWED TO SHED

STEP 2: CUT OUT AN OPENING IN THE WEED MATE FOR THE POST. *NOTE:* THE MAT IS SCORED TO ASSIST CUTTING FOR PROPER FIT AROUND VARIOUS POST CONFIGURATIONS.

STEP 3: USING A SEALANT GUN AND MANUFACTURER SUGGESTED ADHESIVE, (SEE TABLE), LAY DOWN A BEAD OF ADHESIVE AND PRESS SEAL THE MATS TOGETHER.

MANUFACTURED SUGGESTED ADHESIVE	
TDI PN	Description
CR4370-A3	Adhesive, TDI Weed Mat, 10 oz Tube
CR4370-AB	Adhesive, TDI Weed Mat, 10.1 oz Tube
CR4370-AB-20	Adhesive, TDI Weed Mat, 20oz "Sausage"
CR4370-AI	Adhesive, TDI Weed Mat, 10 oz Tube
CR4370-GE	Adhesive, TDI Weed Mat Silicone

UNLESS OTHERWISE SPECIFIED:
 ALL DIMENSIONS ARE IN INCHES [mm]
 TOLERANCES:
 DECIMAL: 0.0 + .0625" [1.59mm]
 0.00 + .032" [0.81mm]
 0.000 + .015" [0.38mm]
 DEGREES: ± 0.5°

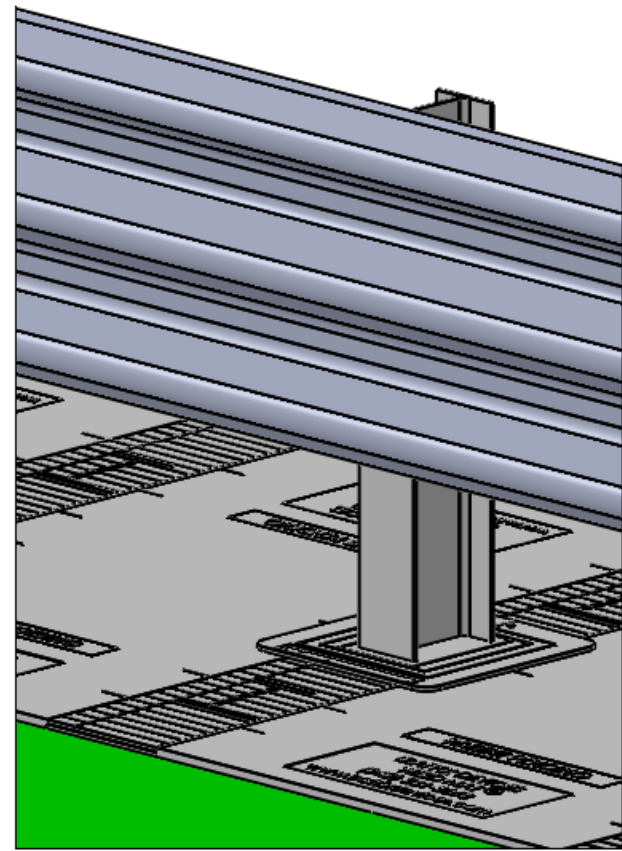
Traffix Devices Inc.  160 Avenida La Pata
 San Clemente, CA 92673
 (949) 361-5663
 FAX (949) 361-9205
 www.traffixdevices.com

TITLE:
**WEED MAT GASKET
 INSTALLATION**

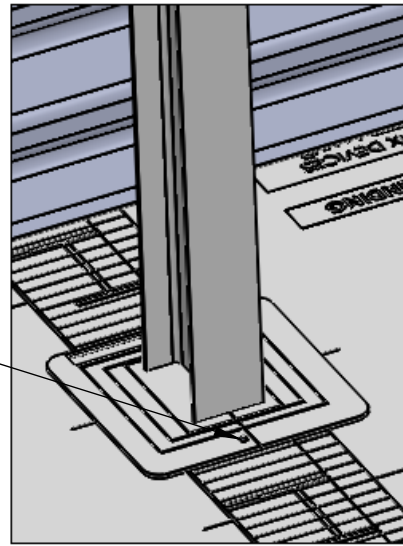
DRAWN BY: Mary Dralle	DATE: 08/07/12
CHECKED BY: GM	DATE: 08/07/12
APPROVED BY: GM	DATE: 08/07/12

SIZE B	DWG. NO. 500-152	A
		SHEET 3 OF 4

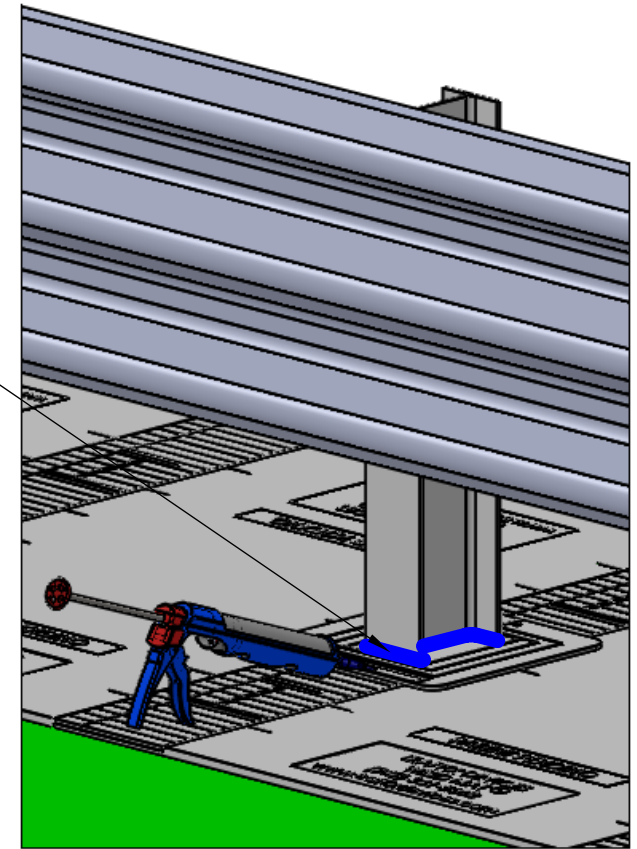
D



GALVANIZED SPIKE NAIL (OPTIONAL)



APPLY ADHESIVE WHERE THE WEED MAT MEETS THE POST



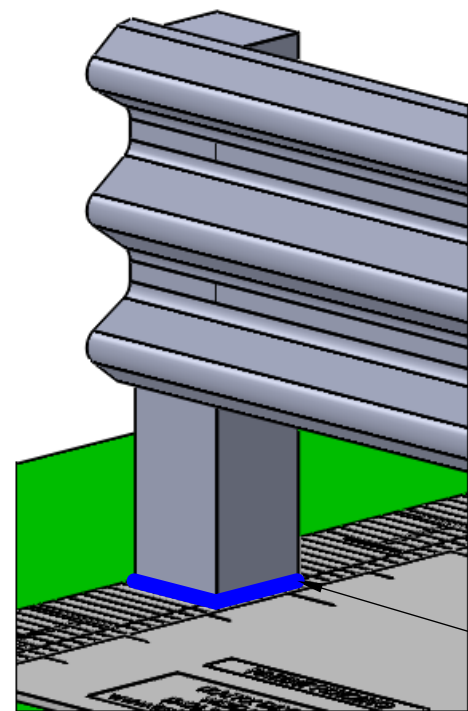
D

C

C

STEP 4: WEED MAT GASKET INSTALL FOR I-BEAM POST - BECAUSE THE WEED MAT GASKET HAS A MANUFACTURER'S PROVIDED OPENING FOR STANDARD 4 X 6 I-BEAM, NO ADDITIONAL CUTTING IS REQUIRED. SLIP THE GASKET AROUND THE I-BEAM POST AND SECURE LAP JOINT WITH A GALVANIZED SPIKE NAIL (OPTIONAL). USING A SEALANT GUN AND MANUFACTURER SUGGESTED ADHESIVE, (SEE TABLE), LAY DOWN A BEAD OF ADHESIVE UNDER ALL FOUR SIDES OF THE GASKET AND PRESS SEAL TOGETHER. ADD ANOTHER BEAD OF ADHESIVE WHERE THE WEED MAT GASKET MEETS THE I-BEAM.

B



STEP 5: FOR WOOD POSTS - CUT WEED MAT TO FIT POSTS. USE ADHESIVE TO SEAL GAP BETWEEN WEED MAT AND POST (A WEED MAT GASKET MAY NOT BE REQUIRED).

APPLY ADHESIVE WHERE THE WEED MAT MEETS THE POST

MANUFACTURED SUGGESTED ADHESIVE

TDI PN	Description
CR4370-A3	Adhesive, TDI Weed Mat, 10 oz Tube
CR4370-AB	Adhesive, TDI Weed Mat, 10.1 oz Tube
CR4370-AB-20	Adhesive, TDI Weed Mat, 20oz "Sausage"
CR4370-AI	Adhesive, TDI Weed Mat, 10 oz Tube
CR4370-GE	Adhesive, TDI Weed Mat Silicone

UNLESS OTHERWISE SPECIFIED:
ALL DIMENSIONS ARE IN INCHES [mm]
TOLERANCES:
DECIMAL: 0.0 + .0625" [1.59mm]
 0.00 + .032" [0.81mm]
 0.000 + .015" [0.38mm]
DEGREES: ± 0.5°

Traffix Devices Inc.  160 Avenida La Pata
San Clemente, CA 92673
(949) 361-5663
FAX (949) 361-9205
www.traffixdevices.com

TITLE:
**WEED MAT GASKET
INSTALLATION**

DRAWN BY: Mary Dralle	DATE: 08/07/12
CHECKED BY: GM	DATE: 08/07/12
APPROVED BY: GM	DATE: 08/07/12

SIZE B	DWG. NO. 500-152	A
------------------	---------------------	----------

A

A